



**KENYA WILD PARKS**  
Discover & Explore Kenya's Attractions



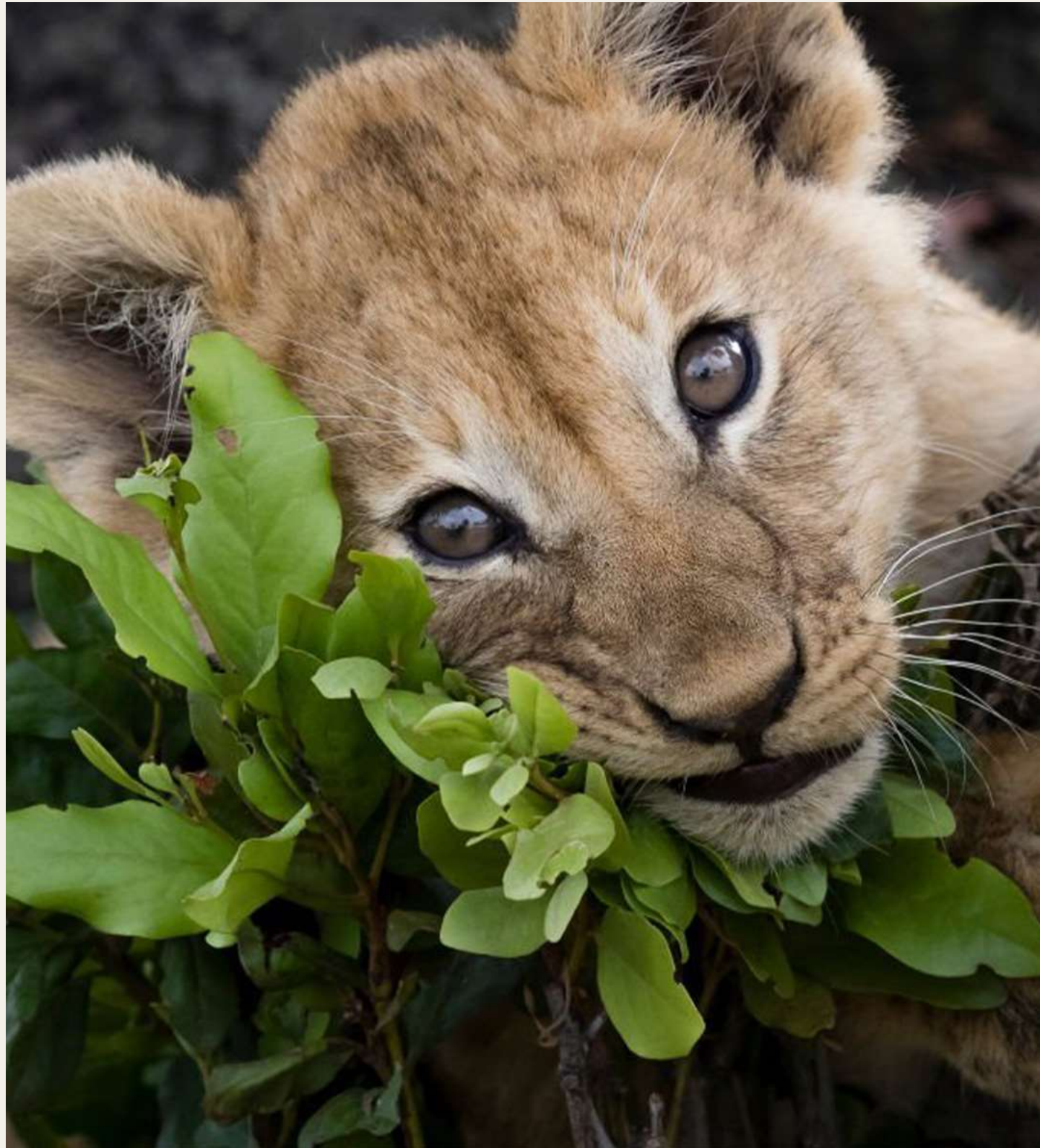
# Kenya Family Safari.

## 8 Days

This 8-day family safari to Kenya covers the 283,000 acres of pristine green Chyulu Hills which is framed by Mount Kilimanjaro, before visiting the great savannah grasslands and bushes of Mara North Conservancy.

## Highlights

1. Track wildlife with a Masai guide in the Chyulu Hills.
2. Excellent game viewing and Maasai cultural experiences
3. Game drives, guided walks, village visits and horse riding



# Day 1: Nairobi.

## ARRIVAL

On arrival at the airport you will be met and briefed by our representative who'll then transfer you to your hotel where you are booked on bed and breakfast check in and overnight stay.

## MEAL PLAN

Breakfast Only.

## ACCOMMODATION

[Ololo Lodge](#)



# Day 2-4: Chyulu Hills.

## FLY TO CHYULU (APPX 1 HR)

Checkout of your hotel after enjoying your breakfast and transfer to Wilson Airport, fly by light aircraft to Chyulu Hills where you are met at an airstrip and driven to your lodge. You have two full days of game drives to look forward to, your guide on the lookout for the area's famed 'big tuskers' – enormous bull elephants – as well as big cats and some more unusual species that you will not see in the Masai Mara such as the endearingly long-necked gerenuk antelope..

## ACTIVITIES

Game Viewing

## MEAL PLAN

Breakfast, Lunch & Dinner.

## ACCOMMODATION

[OI Donyo Lodge](#)





## Day 5-7: Mara North.

### FLY TO MARA NORTH CONSERVANCY (APPX 2 HRS)

Early morning game drive, followed by breakfast. Later transfer to the airstrip for return flight to Nairobi Wilson airport where you will board your connecting schedule flight to Mara North airstrip. On arrival, you'll be met by your hotel representative who'll transfer you to your lodge/camp for check in and your lunch. You will spend 3 nights in Mara North Conservancy, an exclusive game-viewing reserve through which the massed wildebeest herds pass through each year. This part of the Masai Mara is famous for its year-round wildlife and you have spot-lit night drives and guided walks to look forward to as well as morning and afternoon drives with expert. Enjoy your lunch and later head out for your afternoon game drive guides.

### ACTIVITIES

Afternoon Game Drive

### MEALS

Breakfast, Lunch & Dinner

### ACCOMMODATION

[Mara Toto Camp](#)

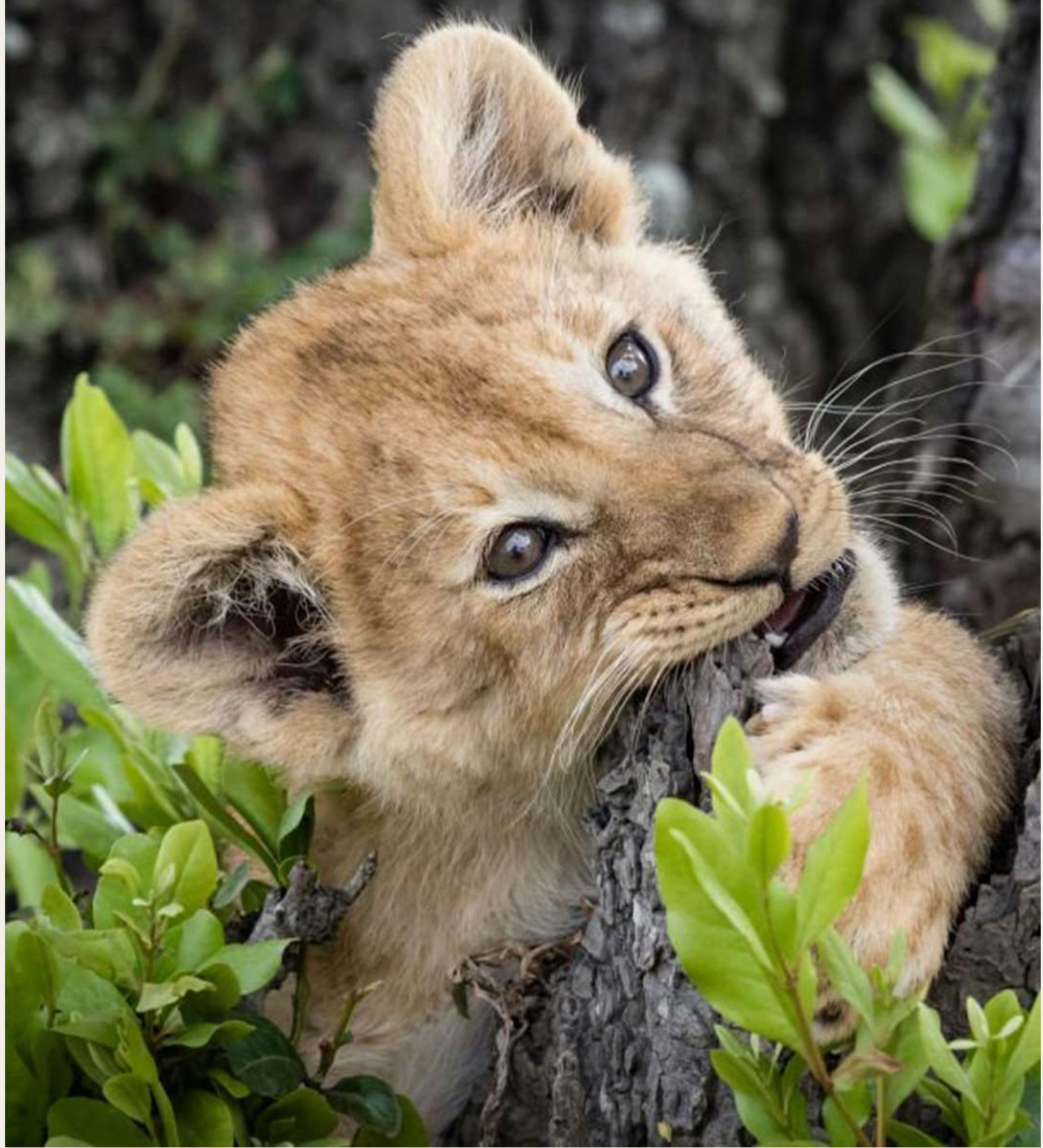


## Day 8: Departure:

Before breakfast, you will go on an early morning game drive. This pre-breakfast game drive provides excellent opportunities to see Big Cats hunting or sharing a kill. At this hour, some elusive animals, such as the leopard, may be seen. Return to the lodge for breakfast before catching your scheduled flight to Nairobi where on arrival you'll transfer to JKIA for your homebound flight.

### MEALS

Breakfast Only



# Need to know

## COST

### ADULT SHARING

From 5,962 per person

## WHAT'S INCLUDED

- Meet and Greet service at Jomo Kenyatta International Airport
- Accommodation inclusions as per the itinerary
- Park Entrance Fees for all reserves / parks
- All transfer and transportation
- Professional English speaking Driver / Guide with high knowledge of Birdlife and Wildlife
- All Government taxes and levy fees

## WHAT'S EXCLUDED

- International flights & Visa Fees
- Travel Insurances
- Items of a personal nature
- Any other extras not detailed in itinerary
- All optional activities & meals
- Covid certificate

## TERMS AND CONDITIONS

Upon Your confirmation of the booking, 50% of the total cost of services is required at the time of booking to confirm all the rooms and services.

Last and final payment of 50% of the total cost of services will be payable (45) days prior to service commencement date.

If, after our confirmation invoice has been issued, you wish to change your travel arrangements in any way, for example, your chosen arrival/departure date or an increase or reduction in number of rooms or services required, we will do our utmost to make these changes but it may not always be possible.

In the event you, or any member of your party, wishes to cancel your travel arrangements at any time. WRITTEN notification from the person who made the booking or your travel agent must be received at our offices. The following scale of cancellation will be payable depending on when the notification of cancellation is received:

- 90-60 days prior 20% of the holiday cost
- 59-30 days prior 50% of the holiday cost
- 29 days or less 100% of the holiday cost

It is very unlikely that we will have to make any changes to your travel arrangements. However, we do plan the arrangements many months in advance and occasionally, therefore, it may be necessary to make changes and we reserve the right to do so at any time. Most of these changes will be minor and we will advise you or your travel agent of them if practicable and time permitting.

Please note that carriers, timings and routings given in the brochure are for guidance only and may be subject to change. Such changes are deemed to be minor changes. Other examples of minor changes include changes to domestic aircraft type or change of accommodation to another of the same standard.

We Look Forward to Host You

KENYA WILD PARKS

**CONTACT US**

[info@kenyawildparks.com](mailto:info@kenyawildparks.com)

**FOLLOW US**

[INSTAGRAM](#)

[FACEBOOK](#)